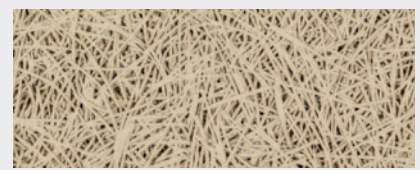
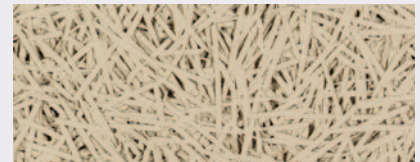


HERADESIGN[®] Creative Line



Pattern - Superfine
(Fibre width 1mm) Colour - Natural



Pattern - Fine
(Fibre width 2mm) Colour - Natural

Features

- Available in 2 textures and a wide range of linear patterns and colours
- Excellent sound absorption for a quieter, more comfortable space
- Durable and impact resistant#
- Sustainable natural ingredients for Green Star contribution
- RH90 humidity resistance with high dimensional accuracy
- Can be applied directly to surfaces such as concrete or plasterboard, or via timber battens or steel stud and track

Application Areas

- Open plan offices
- Restaurants and Hospitality
- Retail spaces
- Gymnasiums, basketball courts and recreational spaces
- Education, including libraries and classrooms
- Auditoriums and multi-function facilities

Product Data

HERADESIGN® Superfine

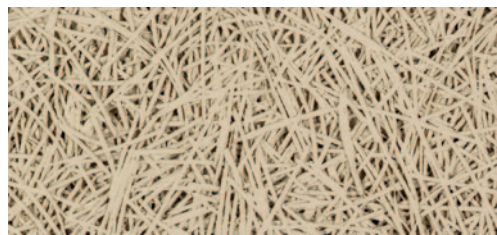
HERADESIGN® Fine



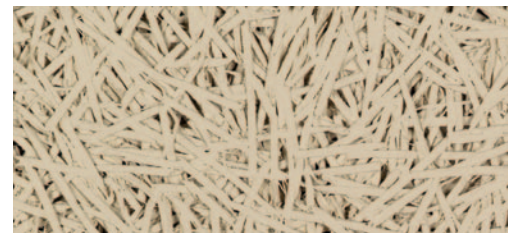
Pattern



Material
Magnesite bonded wood fibres



Superfine (Fibre width 1mm) Colour - Natural

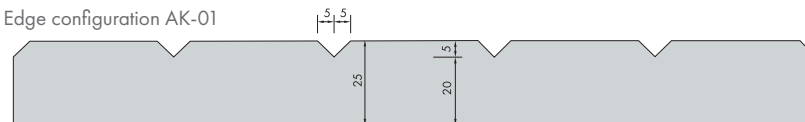


Fine (Fibre width 2mm) Colour - Natural



Edge details and pattern profile.
See page 3 for pattern designs

Edge configuration AK-01



Suspension systems

Timber Battens or Stud & Track Systems (supplied by others). # Refer to Installation Guide for Ball Impact construction for gymnasiums.



Thickness (mm)

25 mm



Dimensions (mm)

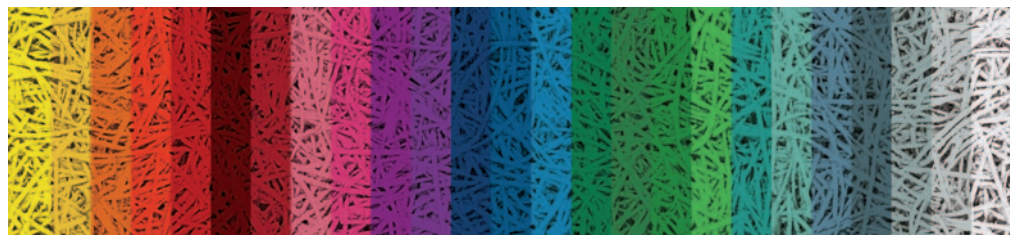
1200 x 600 mm



Colour options

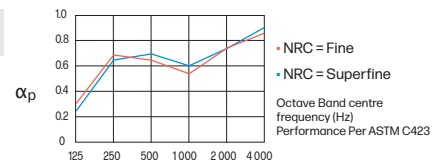
Surface Finish
Factory applied acrylic paint

Visual Consideration
Colour and pattern variation is common across panels due to the natural characteristics of wood



Sound absorption

Pattern	NRC	125	250	500	1000	2000	4000	Hz
Fine	0.70	0.30	0.70	0.65	0.55	0.75	0.85	α_p
Superfine	0.70	0.25	0.65	0.70	0.60	0.75	0.90	α_p



Notes:

- The absorption values above are tested with E-200 mounting (Total construction height of 200mm from bottom of ceiling to under side of slab)
- Tested sound absorption of up to NRC 1.00 with 40mm x 50kg/m³ acoustic infill and E-200 mounting
- Contact your Armstrong office for further details, including test reports



Sound attenuation

EN ISO 354 & EN ISO 11654



Fire resistance

Conforms with NCC Spec. C1.10 as tested to AS 5637.1:2015 - Group 1, and ISO 5660 - Group 1 - S



Thermal resistance

Thermal Insulation (R- Value) 0.25 m²K/W (25mm)



Humidity resistance

Humidity Resistance (RH90% at 5°C - 40°C) Refer to website for additional information



Indoor air quality



Cleanability / Durability



Product Handling



Cleanable



Scratch Resistant



Impact Resistant



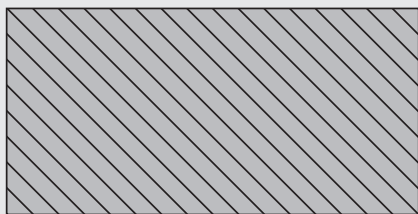
Sustainability



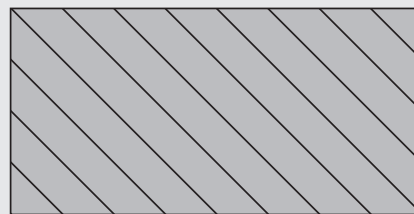
Green Star™: Potential contribution Interiors v1.3 / Design & As Built v1.3

Indoor Environmental Quality		Materials	
Credit 9 / 10 ACOUSTIC COMFORT	Credit 12 / 13 INDOOR POLLUTANTS	Credit 201 / 20.2 RESPONSIBLE BUILDING MATERIALS - Certified Timber	Credit 21-D / 21-D SUSTAINABLE PRODUCTS - Environmental Product Declarations
✓	✓	✓	✓

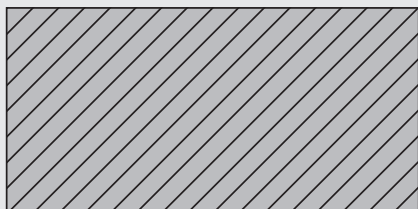
Line DL 16



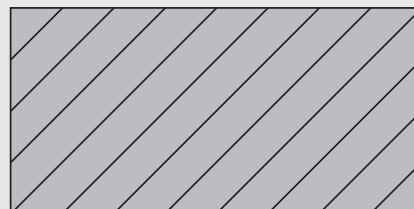
Line DL 8



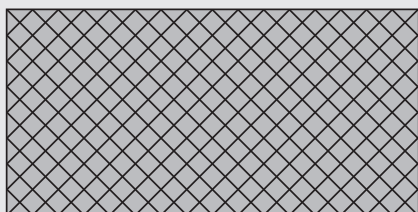
Line DR 16



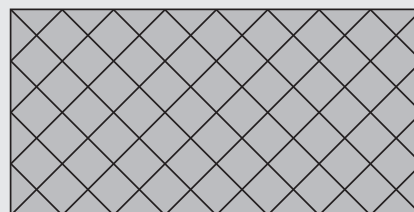
Line DR 8



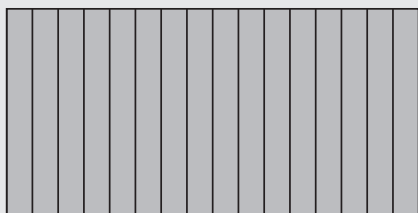
Line DLR 16



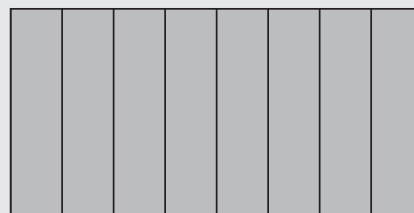
Line DLR 8



Line V 16



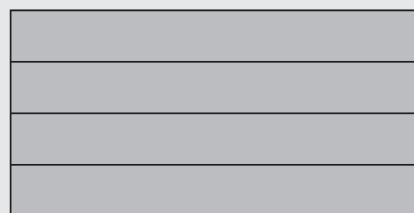
Line V 8



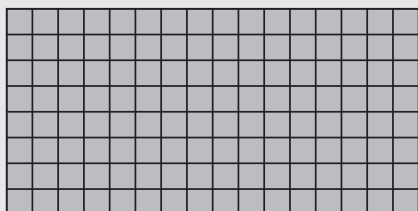
Line H 16



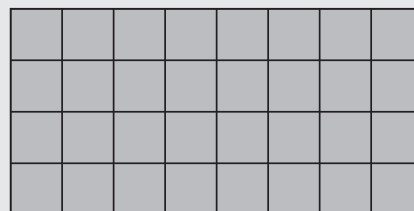
Line H 8



Line VH 16



Line VH 8



Contact

p. +61 2 8198 9900
e. info@amfceilings.com.au
w. amfceilings.com.au

©2023 Australian Mineral Fibre (AMF) Pty Ltd
Produced 03 March 2023

